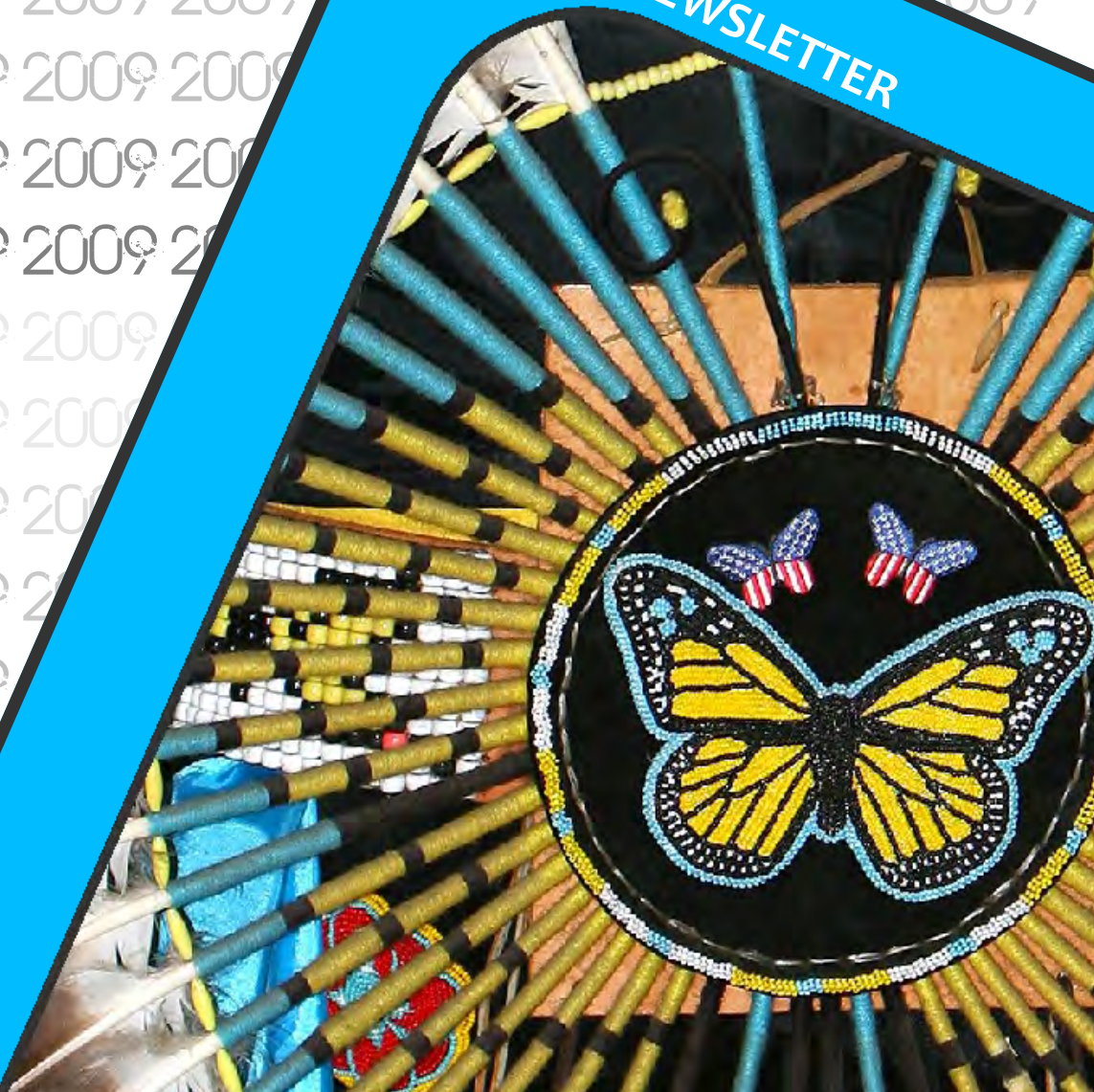




TRIO

TRIO/STUDENT SUPPORT SERVICES MONTHLY NEWSLETTER



TRIO
STUDENT SUPPORT SERVICES
OCTOBER



CAREER *Resources*

**NEW COLLEGE & CAREER CENTER
Grand Opening
November 2-6, 2009
Located in Student Services
Hours are 8:00am -4:30pm
Monday—Friday**

In the Career Center you will find books such as the Occupational Outlook Handbook, tips for writing resumes and cover letters, how to prepare for an interview, and overcoming barriers to employment.

You will also be able to access the Minnesota Career Information System (MCIS). Here you can log on by visiting: <http://mncis.intocareers.org/>. Enter the **Username: LLTC** and **Password: work**. After logging in under LLTC, go to **Create "My MCIS,"** here you will be able to save and change your personal information. Please remember to log in under your own username and password every time after or your results/other personal information will not be saved.

TRiO Student Support Services will continue to provide **career, internship, summer job, and under graduate school information** to students.

**\$800 MN TRiO SCHOLARSHIP 2009-2010: CHECK OUT WWW.MNTRIO.ORG
TO DOWNLOAD THE APPLICATION BY NOVEMBER 17, 2009!**

Scholarships

Ron Brown Scholar Program

Contact: Michael A. Mallory 1160 Pepsi Place, Suite 206, Charlottesville, VA 22901, (434) 964-1588, Fax: (804) 964-1589 www.ronbrown.org, e-mail: mmallory@ronbrown.org; *Eligibility:* Applicants must demonstrate a strong sense of social responsibility and a willingness to extend themselves to others who are in need. *Award:* \$40,000 (\$10,000/4 years)

Stanley E. Jackson Scholarship

Contact: The Foundation for Exceptional Children 1920 Association Drive Reston, VA 22091 (888) CEC-SPED Fax: (703) 264-9494 www.cec.sped.org/index.html; *Eligibility:* Disabled, minority students who are gifted in general intellectual ability, specific academic aptitude, creativity, visual or performing arts, full-time college student, complete application. *Award:* \$1,000

Minority Scholars

Contact: American Chemicals Society Minority Scholars, 1155 16th St., N.W., Washington, D.C. 20036 (800) 227-5558, www.chemistry.org, e-mail: rwainwright@acs.org *Eligibility:* African-American, Hispanic/Latino, American Indian, Alaskan Native and Native Pacific Islander who is a freshmen to senior student in a four or two year university. Applicants must be pursuing degree in chemistry, biochemistry, chemical engineering or related chemical science fields such as material science, toxicology and environmental science. *Award:* \$1,500

Target All-Around Scholarships

Contact: www.target.com; *Eligibility:* Recipients of this award are chosen by an independent organization, not by Target employees. They base their decision on the student's volunteer record, an essay on volunteer service, and an appraisal form filled out by a volunteer supervisor. The minimum GPA is 2.0 and preference is given to students living in an area where a Target store is located. Must be under the age of 24. *Award:* Varies

(DEADLINE: NOVEMBER 1)

| OCTOBER | | | | | | |
|---------|----|----|----|----|----|----|
| S | M | T | W | Th | F | S |
| | | | | 1 | 2 | 3 |
| 4 | 5 | 6 | 7 | 8 | 9 | 10 |
| 11 | 12 | 13 | 14 | 15 | 16 | 17 |
| 18 | 19 | 20 | 21 | 22 | 23 | 24 |
| 25 | 26 | 27 | 28 | 29 | 30 | 31 |

| NOVEMBER | | | | | | |
|----------|----|----|----|----|----|----|
| S | M | T | W | Th | F | S |
| 1 | 2 | 3 | 4 | 5 | 6 | 7 |
| 8 | 9 | 10 | 11 | 12 | 13 | 14 |
| 15 | 16 | 17 | 18 | 19 | 20 | 21 |
| 22 | 23 | 24 | 25 | 26 | 27 | 28 |
| 29 | 30 | | | | | |

| DECEMBER | | | | | | |
|----------|----|----|----|----|----|----|
| S | M | T | W | Th | F | S |
| | | 1 | 2 | 3 | 4 | 5 |
| 6 | 7 | 8 | 9 | 10 | 11 | 12 |
| 13 | 14 | 15 | 16 | 17 | 18 | 19 |
| 20 | 21 | 22 | 23 | 24 | 25 | 26 |
| 27 | 28 | 29 | 30 | 31 | | |

October

Last Day to Officially Withdraw
October 16

University of ND, Grand Forks and University of MN, Crookston Transfer Trip
8:00 am-6:00 pm
October 23

Minnesota Career Information System Workshop
Room 105
12:00 pm-1:00 pm
October 27

Family Fun Night!
"B" Wing, LLTC
4:30 pm- 6:30pm
More on next page
October 30

Happy Halloween!
October 31

November

Scholarships Workshop
12-1pm
November 3

BSU Transfer Trip
8:30-4:30pm
November 6

No Classes- Veterans' Day Observed
November 11

Inspirational Speaker
November 16

MN Career Information System Workshop
November 17

MN TRIO Scholarship
www.mntrio.org
November 17

No Classes-Thanksgiving Holiday
November 25-27

December

Graduation Planning and TRIO Honor Drum at Monday Potluck
December 7

Pre-Registration for Spring Semester
December 7-17

Last Day of Classes
December 10

Finals Week
December 14-17

Fall Semester Ends
December 17

Last Day to Register for Spring Semester
December 30

January 11, 2010
Spring Semester Classes Begin

Tentative Dates

BE THE FIRST STUDENT TO TRANSLATE AND EMAIL (ROSELYNN.JONES@LLTC.EDU) THE CORRECT ANSWER TO THE PHRASE BELOW BY NOVEMBER 21, 2009 AND RECEIVE A \$10 GAS CERTIFICATE TO CHE-WA-KA-GON:

Mashi na gidoojibwem?

ABOUT TRIO/STUDENT SUPPORT SERVICES

The TRIO/Student Support Services Program (TRIO/SSS) at the Leech Lake Tribal College in Cass Lake, MN is 100% funded by the U.S. Department Of Education. In an effort to help our students overcome class, social and cultural barriers, the program offers academic and personal support. The program's mission is to increase retention, graduation, and 4-year transfer rates by offering these services. Provides opportunities for academic development, assists students with basic college requirements, services to motivate students toward the successful completion of postsecondary education, provides supplemental grant aid to current participants, please refer to "Supplemental Grand Aid" section for more information.

During the academic year, TRIO/SSS students receive individual and group advising to foster positive study habits and academic success. Students can take advantage of a comfortable learning environment, financial counseling, leadership opportunities, cultural excursions, and exciting academic workshops. There is no cost of participation for the student.

SUPPLEMENTAL GRANT AID

To be eligible to receive supplemental grant aid, participants must:

- * Have participated in TRIO SSS Program for two consecutive semesters (excludes Summer Sessions)
- * Be a Pell Grant recipient in awarding semester
- * Have an unmet financial aid need of \$609 or more in the awarding semester
- * Have met the required Grade Point Average in both semesters in accordance to LLTC Standard of Academic Progress
- * Complete a Skills & Interest Assessment, University search, and a Scholarship search from the Minnesota Career Information System (MCIS).

******Note:** Grant aid amounts vary each semester dependant on number of student eligible, unmet financial aid need, and total amount of funds available for distribution. Grant aid awarded will be determined by a panel of committee members and will be final.



CAMPUS VISIT

**Friday, October 23
8:00 a.m. - 6:00 p.m.**

Meet at LLTC by 8:00am, Tour the University of North Dakota-Grand Forks Campus, Eat Lunch at UND, Tour the University of Minnesota-Crookston Campus, and return to LLTC by 6:00pm!
Please Sign Up in Student Services by 10-21-09!



UPCOMING TRIO

STUDENT SUPPORT SERVICES

EVENTS

Space is limited (18 Max). Please sign-up in Student Services before 10-26-09 to reserve your seat. Unable to attend? Please visit <http://mncis.intocareers.org/>. Username: LLTC Password: WORK. This workshop is sponsored by LLTC TRIO/SSS



**MINNESOTA CAREER
INFORMATION SYSTEM**

WORKSHOP

**TUESDAY, OCTOBER 27
12:00-1:00PM ROOM 105**



NOTE: Students who are eligible to receive the TRIO Supplemental Grant are required to attend at least one MCIS Workshop and complete a University search, Skills & Interest Assessment, and a Scholarship search from the Minnesota Career Information System.

Leech Lake Tribal College

FAMILY FUN

NIGHT

FRIDAY, OCTOBER

30

4:30-6:30PM

"B" WING, LLTC



Cartoons · Face Painting
Musical Chairs · Pictures
Balloons · Pin the Nose
Guitar Hero · Bingo

FOOD PROVIDED!